

2016

## HEAT, LIFE AND ATMOSPHERE

A real fire is a beautiful and romantic source of heat which creates a warm, cosy atmosphere. There is nothing quite like settling down and watching the flames flickering in the stove as a comfortable warmth spreads throughout the room. A real wood burning stove is an integral part of a home, and provides a wonderful focal point for the entire family during the colder months of the year.



THE ART OF DANISH ENGINEERING



# ATTENTION TO **DETAIL**

When the weather outside begins to chill, a stove naturally becomes the heart of the home. A centre focal point for all the family, it is essential to choose a brand you can trust. Westfire stands for high quality craftsmanship and impeccable attention to detail; leaving you safe in the knowledge that your stove will last for many years, performing to the highest levels of efficiency and environmental standards. When correctly used with well managed wood, your stove will be CO<sub>2</sub>-neutral making it a responsible option for a renewable energy source. For a functional and highly efficient stove with a focus on design, Westfire is the perfect choice.



WESTFIRE.UNIQ.28 / BLACK WITH SOAPSTONE



WESTFIRE.UNIQ.32 / INSERT, FRAMELESS



## CAREFULLY DESIGNED FOR WARMTH

Westfire designs stoves with great care and attention to detail. A wood burning stove must complement the home in which it is installed since it will outlast both the furniture and the décor. Westfire has therefore developed a future-proof design characterised by simplicity, timelessness and contemporary technology.

Using a wood burning stove to heat your home is a natural process which does not contribute to the greenhouse effect. Westfire's stoves make effective use of thermal energy and are very environmentally friendly.

A stove brings the family closer – all members, young and old, can work together to split logs, bring in firewood and feed the fire. And the whole family can enjoy the great indoor climate and the natural heat produced by a wood burning stove.



WESTFIRE.UNIQ.32 / BLACK WITH PEDESTAL



NEW



WESTFIRE.UNIQ.37 / BLACK



\* Date of approval April 2016





NEW



\* Date of approval April 2016



WESTFIRE.UNIQ.37 / BLACK WITH PEDESTAL





WESTFIRE.UNIQ.33 / SIDE GLASS / BLACK







WESTFIRE.UNIQ.34 / SIDE GLASS / BLACK





WESTFIRE.UNIQ.26 / BLACK





NEW



WESTFIRE UNIQ.26 LARGE / BLACK



## QUALITY STOVES IN LINE WITH THE LATEST TECHNOLOGY

Westfire has developed a complete range of wood burning stoves, flue pipes, chimneys and accessories recognisable by their clean lines. All Westfire's products are manufactured in accordance with the finest traditions of craftsmanship. The stoves incorporate the latest combustion technology, which ensures economical and clean combustion. Westfire's stoves are available with top or back flue outlets, making them suitable for new and older buildings alike.



## WESTFIRE 28 WITH HEAT STORAGE SYSTEM

The new Westfire Uniq 28 heat storage stove gently absorbs heat from your stove whilst it is operating. Heat storage is the combination of the wood-burning stove's ability to quickly and comfortably distribute the convection heat and the mass stove's ability to store the heat, so when the stove has burnt out the stove will continue to slowly dissipate heat long after the fire's heat has died down\*. This type of system is perfect for maintaining a steady heat flow in your home, avoiding the necessity of burning your appliance continually.

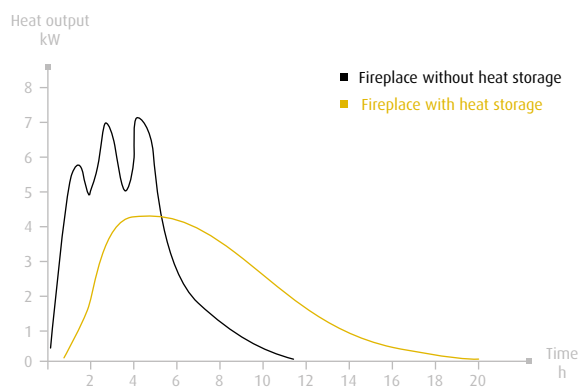
\* The time span the heat will be dissipated is dependent on stone temperature and room temperature and size.



WESTFIRE.UNIQ.28 / BLACK WITH SOAPSTONE



### HEAT OUTPUT GRAPH



\* Results after performance from three burn cycles of standard test load weights.



WESTFIRE.UNIQ.33 / BLACK







WESTFIRE.UNIQ.27 / BLACK











WESTFIRE.UNIQ.15 / BLACK





NEW



WESTFIRE.UNIQ.21 / BLACK



## BEAUTIFUL SOLUTIONS THAT **WORK**

Westfire is a tried-and-tested concept, with attention paid to every detail. We have many years' experience in the development of exciting and functional solutions for the home. We offer both hearth plates and chimneys to complement our range of stunning wood burning stoves, making it easy to create a stylish and exclusive look in your home.



WESTFIRE.UNIQ.21 / BLACK WITH PEDESTAL







WESTFIRE.UNIQ.35 / INSERT











WESTFIRE.UNIQ.32 / INSERT / NF / FULL GLASS FRONT





WESTFIRE.UNIQ.32 / INSERT / WIDE FRAME





## STUNNING **DESIGN** AND A COMFORTABLE CLIMATE

Westfire manufactures a range of highly functional wood burning stoves that meet the most stringent requirements for environmentally friendly combustion. Convection stoves heat the air and spread it evenly throughout the room. At Westfire, you can choose the stove that best matches your requirements. Whatever your choice of Westfire stove, you are guaranteed an efficient and economical source of heat.





WESTFIRE.UNIQ.23 / SIDE GLASS / PEDESTAL 2





WESTFIRE.UNIQ.23 / SIDE GLASS / PEDESTAL 3





WESTFIRE.UNIQ.23 / ON STAND / 50 MM BLOCK







## UNIQ 23 FEATURES

- Large glass area
- Clean burn technology
- Primary, secondary and tertiary air
- Closed combustion air supply
- Efficient convection stove
- Three leg heights 50 mm, 100 mm or 300 mm
- Ash pan







WESTFIRE.UNIQ.23 / ON 100 MM LEGS







WESTFIRE.UNIQ.23 / INSERT





NEW



WESTFIRE.ONE / PEDESTAL





NEW



WESTFIRE.ONE / BLACK





WESTFIRE.TWO / BLACK



NEW





NEW



WESTFIRE.TWO / PEDESTAL





WESTFIRE.UNIQ.17 / BLACK





WESTFIRE.UNIQ.18 / BLACK







WESTFIRE.UNIQ.5A / BLACK WITH SOAPSTONE

## ECONOMIC ADVANTAGES

Using wood to heat your home can yield huge savings, and it is often possible to recoup the investment in a new wood burning stove over a very short period of time. It is important to choose the right size of stove, and to position it correctly within the house, in order to obtain the greatest possible benefit from the heat which is emitted. Westfire has developed many different types of wood burning stoves, all available in different sizes with a range of options. Which, of course, means that you will get the most advantageous solution, whatever your requirements.



NEW



WESTFIRE.UNIQ.18 / BLACK WITH DOOR





WESTFIRE.UNIQ.5A / BLACK

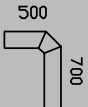
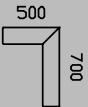
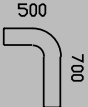
## WESTFIRE HEARTH PLATES

	STANDARD PLATE SMALL	STANDARD PLATE MEDIUM	STANDARD PLATE BIG	TEARDROP SHAPED PLATE	TEARDROP SHAPED PLATE	TRUNCATED PLATE	SQUARE PLATE	RECTANGULAR PLATE
<b>WF STEEL PLATES</b> 2 mm			 Product no. 5015	 Product no. 5011				
<b>WF SLATE PLATES</b> 20 mm		 Product no. 5007 (G)	 Product no. 5005 (G)	 Product no. 5001 (G)				
<b>WF GLASS PLATES</b> 12 mm Hardened glass		 Product no. p19	 Product no. p6		 Product no. p15	 Product no. p14	 Product no. p13	 Product no. p18
<b>WF GLASS PLATES</b> 6 mm Hardened glass	 Product no. p16		 Product no. p6	 Product no. p11	 Product no. p15	 Product no. p14	 Product no. p13	

(G) = Available in grey

# WESTFIRE FLUE PIPE SETS

All flue pipes from Westfire are made of 2 mm high-grade steel and are available with a black or grey lacquered finish.  
All flue pipe sets are supplied with a short wall sleeve and one rosette (decorative ring). Internal pipe diameter: 150 mm.

	PRODUCT NUMBER	DESCRIPTION	STANDARD DIMENSIONS
	9005 (G)	Flue pipe set 2 x 45°	700 x 500 mm
	9101 (G)	Flue pipe set 90°	700 x 500 mm
	9103 (G)	90° soft bend flue pipe	700 x 500 mm

(G) = Grey



WESTFIRE DIGITAL MOISTURE METER



## WESTFIRE FLUE PIPES

No.	Product no.	Description	Standard dimensions
1	9002 (G)	Flue pipe, 45° elbow	26 x 31 cm
3	9003 (G)	Flue pipe, 45° elbow, short	14 x 14 cm
	9015 (G)	Flue pipe extension	15 cm
4	9025 (G)	Flue pipe extension	25 cm
5	9033 (G)	Flue pipe extension	33 cm
6	9050 (G)	Flue pipe extension	50 cm
7	9100 (G)	Flue pipe extension	100 cm
8	9110	Wall sleeve, short	10 cm
9	9111	Wall sleeve, long	29 cm
10	9113 (G)	Rosette	-
11	9114	Flue damper	-
12	9100	Connector piece	-
13	0090 (G)	0-90° swivel elbow	-
	9113(G)	Rosette 45 gr.	-
	9100	Flue pipe extension w/door	100 cm
	9050	Flue pipe extension/adjustable	50 cm
	91005(G)	Starter pipe	100 cm
	91010 (G)	Starter pipe	10 cm

(G) = Grey

## WESTFIRE CHIMNEYS

- | No. | Description                                |
|-----|--|
| 1   | Starter pipe, uninsulated                  |
| 2   | Chimney section, insulated, with connector |
| 3   | Roof flashing                              |
| 4   | Ceiling collar                             |
| 5   | Chimney cowl (mounted on chimney section)  |
| 6   | Connector                                  |




Westfire's sectional chimneys are CE approved  
(minimum distance to combustible materials 25 mm).





# TECHNICAL DATA

	TESTED OUTPUT	HEIGHT/WIDTH/DEPTH	WEIGHT	RECOMMENDED AREA	LOADING DOOR (LOG LENGTH)	HEIGHT TO CENTRE OF REAR OUTLET	DISTANCE FROM REAR TO CENTRE OF TOP OUTLET	TESTING CE SINTEF EN DEFRA	DISTANCE COMBUS-TIBLE REAR	DISTANCE COMBUS-TIBLE SIDES	HEIGHT TO CENTER OF CLOSED CUMBUS-TION INTAKE
WESTFIRE.UNIQ.5	4,7 kW	80 cm/50 cm/38.5 cm	76 kg	30-100 m²	37 cm	-	13,5 cm	• •	17,5 cm	25 cm	-
WESTFIRE.UNIQ.15	5 kW	107 cm/44 cm/43 cm	110 kg	30-100 m²	30 cm	96 cm	15,5 cm	• • • •	15 cm	35 cm	11 cm
WESTFIRE.UNIQ.16	5 kW	112 cm/44 cm/44 cm	116 kg	30-100 m²	30 cm	96 cm	18 cm	• • • •	15 cm	35 cm	11 cm
WESTFIRE.UNIQ.17	5 kW	75 cm/50 cm/37 cm	84 kg	30-100 m²	32 cm	60,5 cm	13,5 cm	• • • •	17,5 cm	35 cm	6 cm
WESTFIRE.UNIQ.18	5 kW	95 cm/50 cm/37 cm	92 kg	30-100 m²	32 cm	80,5 cm	13,5 cm	• • • •	17,5 cm	35 cm	21 cm
WESTFIRE.UNIQ.21	5 kW	80 cm/46 cm/43 cm	81 kg	30-100 m²	30 cm	69,5 cm	15,5 cm	• • • •	17,5 cm	30 cm	9,5 cm
WESTFIRE.UNIQ.21 WALL-MOUNTED	5 kW	73 cm/46 cm/43 cm	81 kg	30-100 m²	30 cm	>69,5 cm	15,5 cm	• • • •	17,5 cm	30 cm	<9,5 cm
WESTFIRE.UNIQ.21 WITH PEDESTAL	5 kW	114 cm/46 cm/43 cm	91 kg	30-100 m²	30 cm	103 cm	15,5 cm	• • • •	17,5 cm	30 cm	49 cm
WESTFIRE.UNIQ.23 ON 300 MM LEGS	6,1 kW	85 cm/55 cm/38 cm	92 kg	40-110 m²	40 cm	74,5 cm	13,5 cm	• • • •	20 cm	35 cm/45 cm SG	37 cm
WESTFIRE.UNIQ.23 ON 100 MM LEGS	6,1 kW	65 cm/55 cm/38 cm	92 kg	40-110 m²	40 cm	54,5 cm	13,5 cm	• • • •	20 cm	35 cm/45 cm SG	17 cm
WESTFIRE.UNIQ.23 ON 50 MM LEGS	6,1 kW	60 cm/55 cm/38 cm	92 kg	40-110 m²	40 cm	49,5 cm	13,5 cm	• • • •	20 cm	35 cm/45 cm SG	12 cm
WESTFIRE.UNIQ.23 WITH PEDESTAL 2	6,1 kW	105 cm/55 cm/38 cm	112 kg	40-110 m²	40 cm	94,5 cm	13,5 cm	• • • •	20 cm	35 cm/45 cm SG	57 cm
WESTFIRE.UNIQ.23 WITH PEDESTAL 3	6,1 kW	85 cm/55 cm/38 cm	112 kg	40-110 m²	40 cm	74,5 cm	13,5 cm	• • • •	20 cm	35 cm/45 cm SG	57 cm (37 cm)
WESTFIRE.UNIQ.23 INSERT	6,1 kW	H. 66 cm/B. 67 cm Building in dimensions: H/B/D: 60 x 61 x 37,5 cm	92 kg	40-110 m²	40 cm	47 cm	13,5 cm	• • • •	20 cm	35 cm	10 cm
WESTFIRE.UNIQ.26	4,4 kW	100 cm/46,5 cm/43,5 cm	105 kg	30-100 m²	30 cm	89,5 cm	15,6 cm	• • • •	10 cm	30 cm	11 cm
WESTFIRE.UNIQ.26 LARGE	4,4 kW	120 cm/46,5 cm/43,5 cm	120 kg	30-100 m²	30 cm	109,5 cm	15,6 cm	• • • •	10 cm	30 cm	31 cm
WESTFIRE.UNIQ.27	4,4 kW	105 cm/47 cm/47 cm	110 kg	30-100 m²	30 cm	89,5 cm	19,2 cm	• • • •	10 cm	30 cm	11 cm
WESTFIRE.UNIQ.28	4,4 kW	135 cm/47 cm/47 cm	120 kg	30-100 m²	30 cm	89,5 cm	19,2 cm	• • • •	10 cm	30 cm	11 cm
WESTFIRE.UNIQ.32 INSERT (NARROW FRAME)	5,9 kW	H. 61 cm/B. 88 cm Building in dimensions: H/B/D: 55,5 x 81 x 42,5 cm	110 kg	50-150 m²	65 cm	40,5 cm	17 cm	• • • •	20 cm	15 cm	7 cm
WESTFIRE.UNIQ.32 INSERT (WIDE FRAME)	5,9 kW	H. 57 cm/B. 100 cm Building in dimensions: H/B/D: 55,5 x 81 x 40 cm	110 kg	50-150 m²	65 cm	40,5 cm	17 cm	• • • •	20 cm	15 cm	7 cm
WESTFIRE.UNIQ.32 INSERT (FRAMELESS)	5,9 kW	H. 55 cm/B. 81 cm Building in dimensions: H/B/D: 55 x 81 x 45 cm	110 kg	50-150 m²	65 cm	40,5 cm	17 cm	• • • •	20 cm	15 cm	7 cm
WESTFIRE.UNIQ.32 WITH PEDESTAL	5,9 kW	102 cm/100 cm/41 cm	135 kg	50-150 m²	65 cm	85,5 cm	15 cm	• • • •	20 cm	15 cm	52 cm
WESTFIRE.UNIQ.33	6,1 kW	105 cm/50 cm/44 cm	118 kg	50-150 m²	33 cm	91 cm	13 cm	• • • •	20 cm	35 cm	7 cm
WESTFIRE.UNIQ.33 SIDE GLASS	6,1 kW	105 cm/46 cm/44 cm	118 kg	50-150 m²	33 cm	91 cm	13 cm	• • • •	20 cm	45 cm	7 cm
WESTFIRE.UNIQ.34 SIDE GLASS	6,1 kW	121 cm/46 cm/44 cm	124 kg	50-150 m²	33 cm	106,5 cm	13 cm	• • • •	20 cm	45 cm	8 cm
WESTFIRE.UNIQ.35 WITH PEDESTAL	4,3 kW	98,5 cm/39 cm/36 cm	114 kg	30-100 m²	29 cm	-	11,5 cm	• • • •	20 cm	20 cm	50,5 cm
WESTFIRE.UNIQ.35 50 MM BLOCK	4,3 kW	59,5 cm/39 cm/36 cm	95 kg	30-100 m²	29 cm	-	11,5 cm	• • • •	20 cm	20 cm	11 cm
WESTFIRE.UNIQ.35 INSERT, 4-SIDED WESTFIRE.UNIQ.35 INSERT, 3-SIDED	4,3 kW	H. 62,5 cm/B. 48 cm H. 59 cm/B.48 cm Building in dimensions: H/B/D: 56 x 40 x 35 cm	75 kg	30-100 m²	29 cm	-	11,5 cm	• • • •	20 cm	20 cm	6,5 cm
WESTFIRE.UNIQ.37	7,2 kW	98 cm/50,5 cm/44,5 cm	90 kg	50-100 m²	35 cm	86 cm	19,5 cm	• • • •	10 cm	60 cm	-
WESTFIRE.UNIQ.37 WITH PEDESTAL	7,2 kW	115 cm/50,5 cm/44,5 cm	95 kg	50-100 m²	35 cm	103 cm	19,5 cm	• • • •	10 cm	60 cm	-
WESTFIRE.ONE	4,9 kW	57 cm/41 cm/41 cm	80 kg	30-100 m²	30 cm	45,5 cm	12 cm	• • • •	45 cm	65 cm	17 cm
WESTFIRE.ONE WITH PEDESTAL	4,9 kW	85 cm/41 cm/41 cm	110 kg	30-100 m²	30 cm	73,5 cm	12 cm	• • • •	45 cm	65 cm	46 cm
WESTFIRE.TWO	7,1 kW	57 cm/56 cm/41 cm	100 kg	50-150 m²	42 cm	45,5 cm	12 cm	• • • •	45 cm	60 cm	17 cm
WESTFIRE.TWO WITH PEDESTAL	7,1 kW	85 cm/56 cm/41 cm	135 kg	50-150 m²	42 cm	73,5 cm	12 cm	• • • •	45 cm	60 cm	46 cm

Flue outlet - top and rear are suitable for Westfire flue pipes with an external diameter of 154mm (internal diameter 150mm). Westfire Uniq 35 has flue diameter 125mm internal.

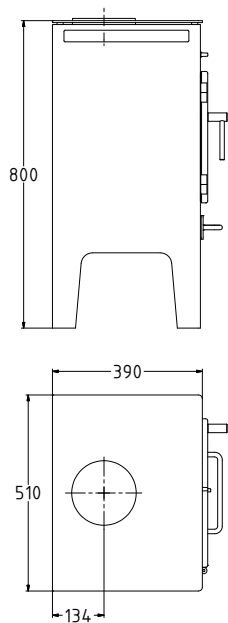
Approved for use  
in Smoke  
Control  
Areas



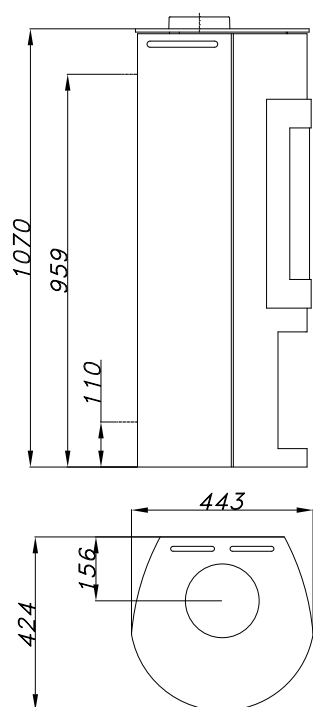
Westfire combustion chambers are very efficient and designed to burn cleanly. Stoves displaying the tick logo are approved for burning wood in a smoke control area, special note should be taken to the manufacturer's instructions on burning stoves in a smoke control zone. Wood burnt should be split and dry and have a moisture content of 15% or below and be free of chemical treatments. When purchasing a Westfire stove please request a DEFRA approved model to ensure you receive an approved stove.

# MODELS

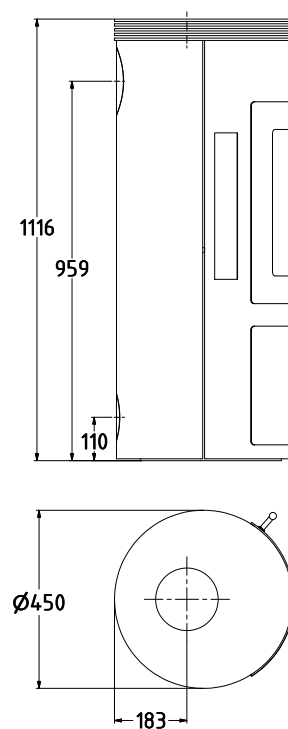
WESTFIRE.UNIQ.5



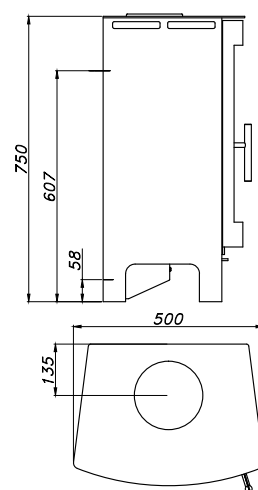
WESTFIRE.UNIQ.15



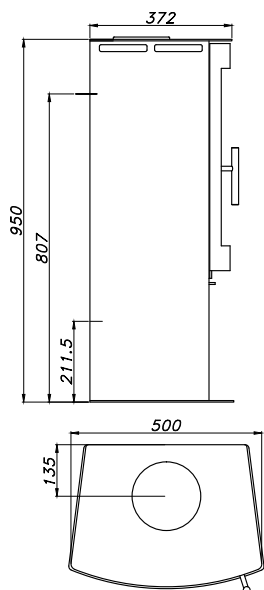
WESTFIRE.UNIQ.16



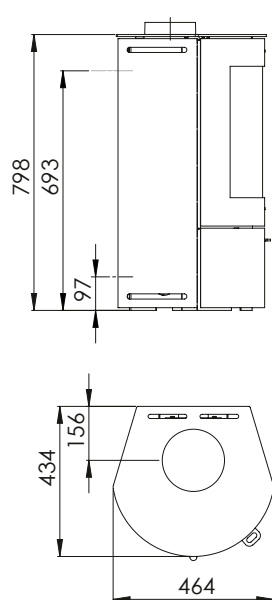
WESTFIRE.UNIQ.17



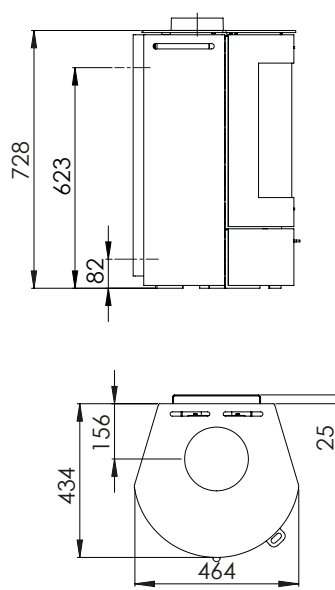
WESTFIRE.UNIQ.18



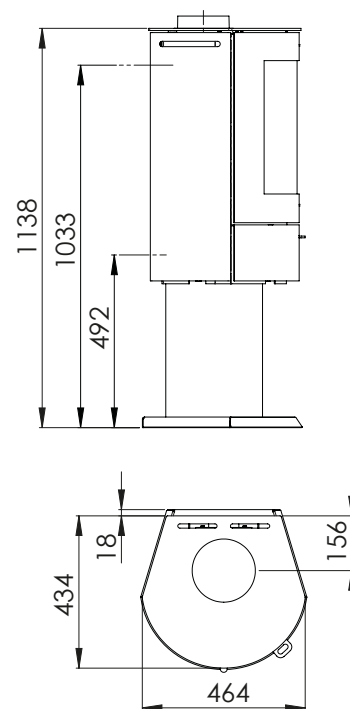
WESTFIRE.UNIQ.21



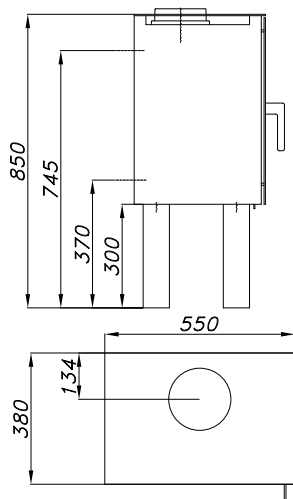
WESTFIRE.UNIQ.21 / WALL-MOUNTED



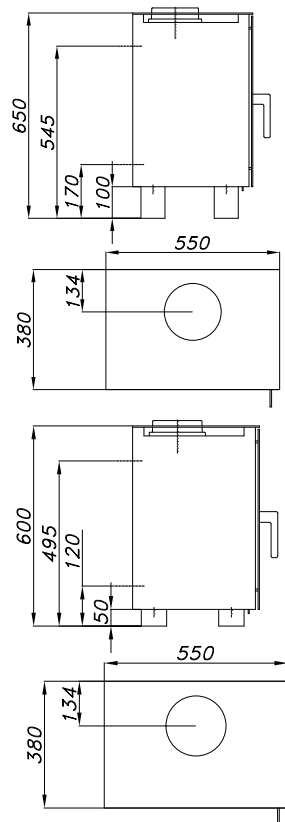
WESTFIRE.UNIQ.21 / PEDESTAL



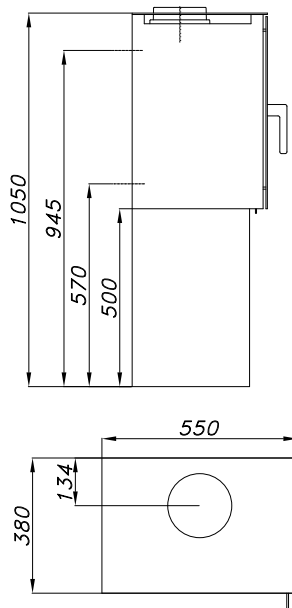
WESTFIRE.UNIQ.23 / ON LEGS 300 MM



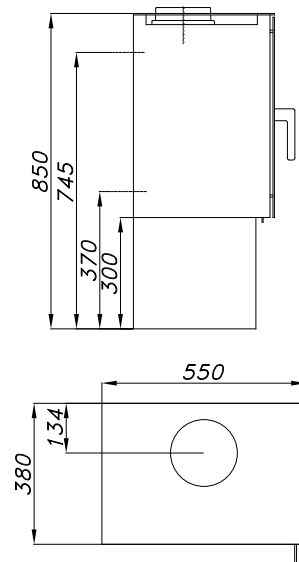
WESTFIRE.UNIQ.23 / ON LEGS 50/100 MM



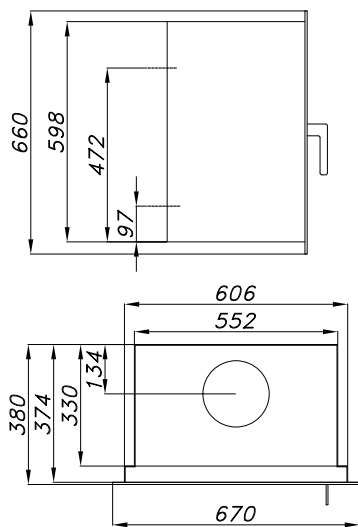
WESTFIRE.UNIQ.23 / PEDESTAL



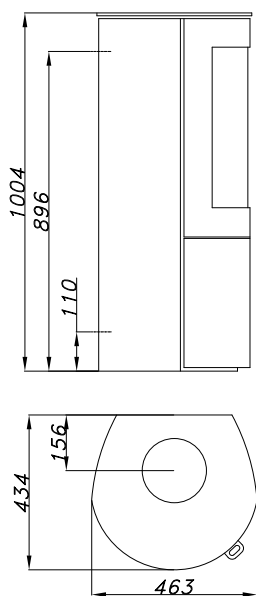
WESTFIRE.UNIQ.23 / PEDESTAL/ SIDEGLASS



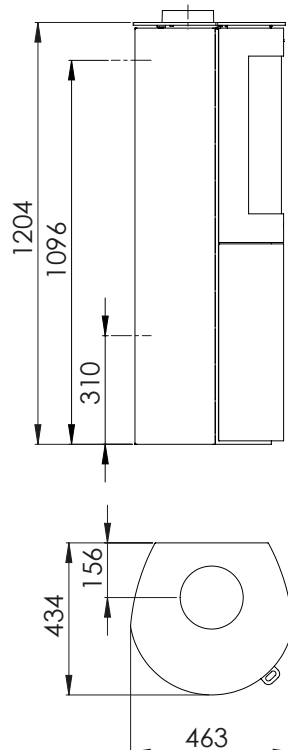
WESTFIRE.UNIQ.23 INSERT



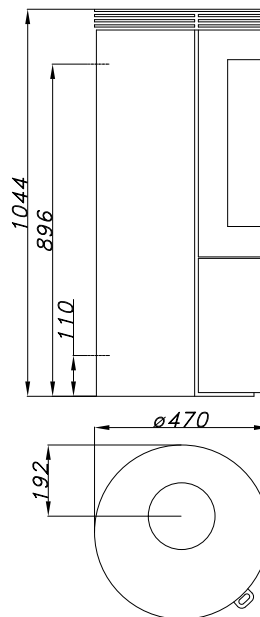
WESTFIRE.UNIQ.26



WESTFIRE.UNIQ.26 L



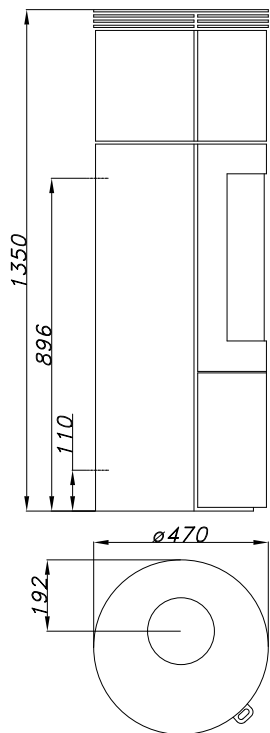
WESTFIRE.UNIQ.27



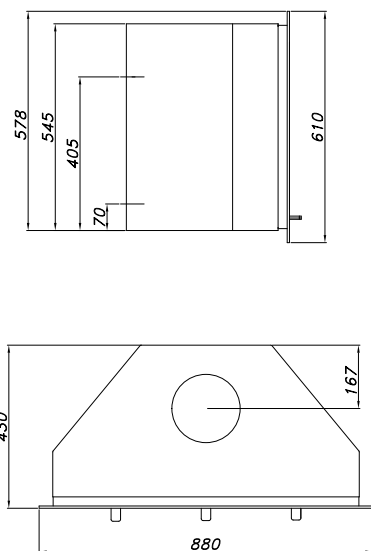


# MODELS

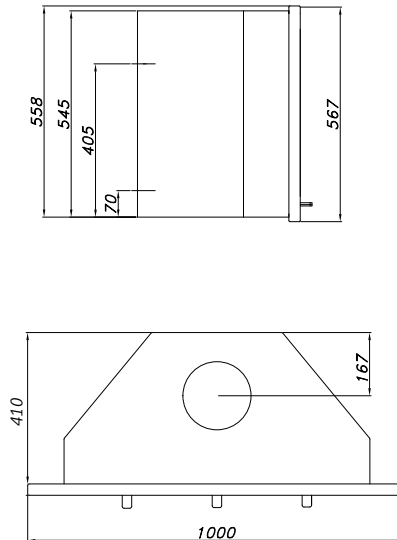
WESTFIRE.UNIQ.28



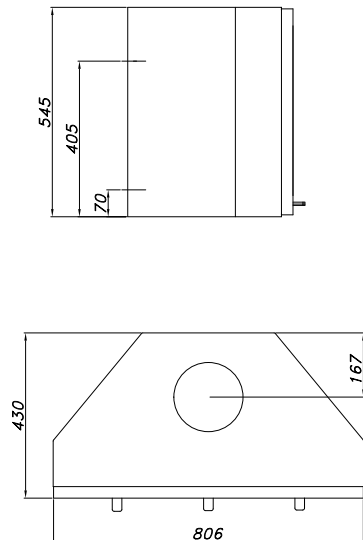
WESTFIRE.UNIQ.32 / INSERT  
NARROW FRAME



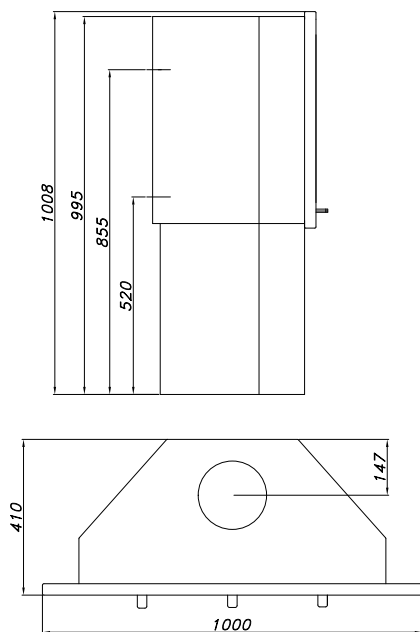
WESTFIRE.UNIQ.32 / INSERT  
WIDE FRAME



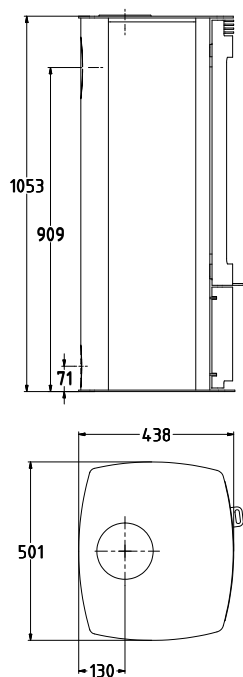
WESTFIRE.UNIQ.32 / INSERT  
FRAMELESS



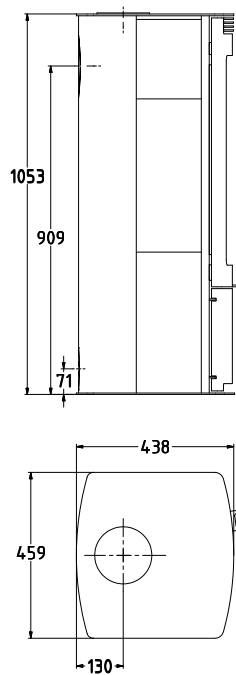
WESTFIRE.UNIQ.32 / PEDESTAL



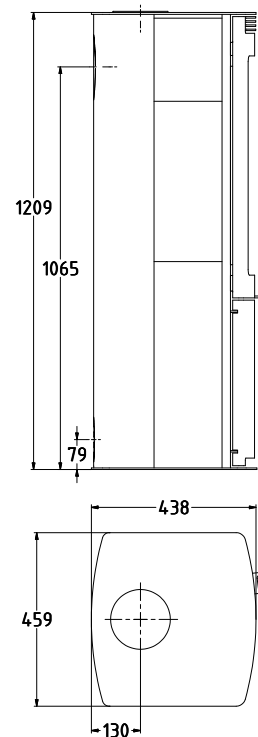
WESTFIRE.UNIQ.33



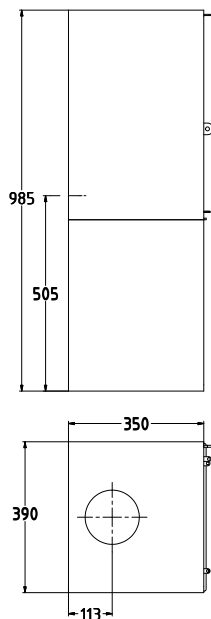
WESTFIRE.UNIQ.33 / SIDEGLASS



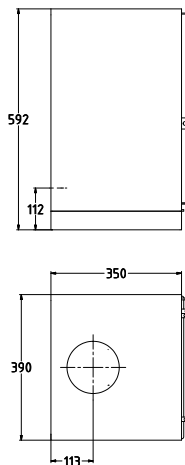
WESTFIRE.UNIQ.34 / SIDEGLASS



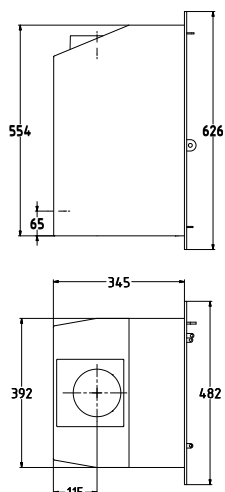
WESTFIRE.UNIQ.35 / PEDESTAL



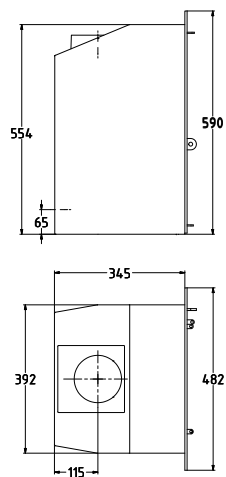
WESTFIRE.UNIQ.35 / BLOCK



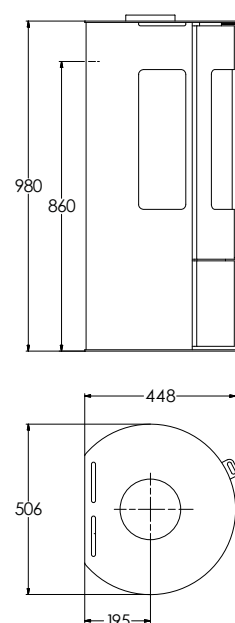
WESTFIRE.UNIQ.35 / INSERT  
4-SIDES



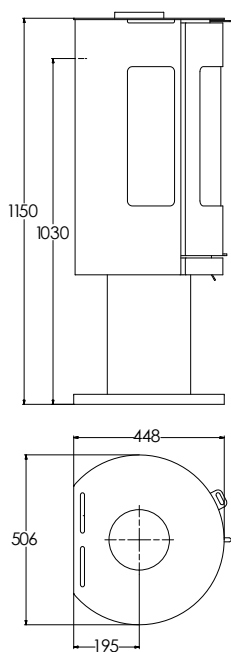
WESTFIRE.UNIQ.35 / INSERT  
3-SIDES



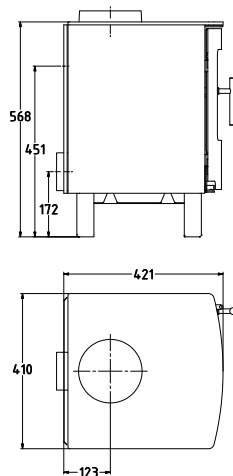
WESTFIRE.UNIQ.37



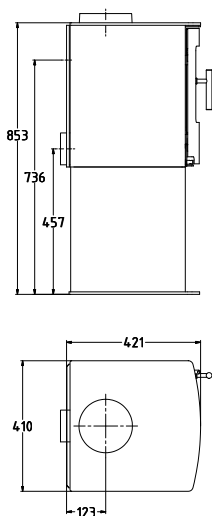
WESTFIRE.UNIQ.37 / PEDESTAL



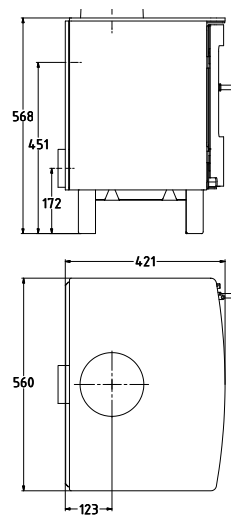
WESTFIRE.ONE



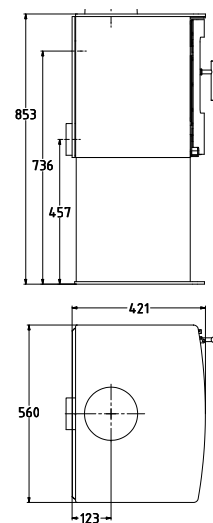
WESTFIRE.ONE / PEDESTAL



WESTFIRE.TWO



WESTFIRE.TWO / PEDESTAL





WESTFIRE.UNIQ.32 / INSERT, NARROW FRAME



WESTFIRE / CONVECTION GRILL FOR INSERT



WESTFIRE.UNIQ.32 / INSERT

## QUALITY YOU CAN FEEL

All wood burning stoves from Westfire carry the CE mark. A CE/EN approval means that the stoves have been tested and approved by the Danish Technological Institute in accordance with EN 13240. The CE mark is your guarantee that the stove meets a number of stringent requirements as regards safety, the environment and fuel economy.

Westfire stoves are characterised by a number of technical advantages that ensure their long durability, high heating efficiency and reliant operation.

### Fuel types

Westfire stoves are accredited for burning wood and CE marked for this purpose. Although the appliances will burn other fuels Westfire do not recommend the use such fuels in our appliances.



WESTFIRE

STOVES<sup>ONLINE</sup>

Stovesonline Limited, Dunkeswell, Devon, EX14 4RD  
Registered in England and Wales, Company no. 04636920

• Tel: 0845 226 5754

• E-mail: [info@stovesonline.co.uk](mailto:info@stovesonline.co.uk)

• [www.stovesonline.co.uk](http://www.stovesonline.co.uk)