

DEFRA



APPROVED

# PARKRAY

## *Consort Style Guide*



DEFRA Approved - Consort 5, Compact 5, Slimline 5 & Consort 7



## Approved for Smoke Control Areas.

If you live in a designated Smoke Control Area, the Clean Air Act prevents you from emitting smoke from your chimney – with offenders facing a fine of up to £1000. This means you're usually only able to burn authorised smokeless fuel. However, our fires are not like ordinary stoves.

They smoke so little that DEFRA has declared them both exempt from the Clean Air regulations.

This means you can use the above fires to burn wood logs, even if you live in a Smoke Control Area. The built-in technology ensures that emissions are consistently low. We're delighted

to have met the stringent demands of the Department for the Environment, Food & Rural Affairs. And, especially if you're in a Smoke Control Area, you'll be equally delighted with the results.

You can find our DEFRA approved stoves here on the following pages

Consort 5            Page 2

Compact 5            Page 6

Slimline 5            Page 8

Consort 7            Page 16

## Contents



Consort 4	2	
Consort 5 DEFRA APPROVED	4	
Compact 5 DEFRA APPROVED	6	
Slimline 5 DEFRA APPROVED	8	
Derwent	10	
Inset - Consort Inset 5 & 7	12	
Slimline 9	14	
Consort 7 DEFRA APPROVED	16	
Consort 9	18	
Consort 15	20	
Consort 4 DOUBLE SIDED	22	
Consort 7 DOUBLE SIDED	24	
Consort 9 DOUBLE SIDED	26	
Consort 15 DOUBLE SIDED	28	
Cleanburn technology	30	
FAQs	32	
Technical key	34	
Options	36	
Technical specifications	38-45	



All Parkray Stoves now come with the option of a 2-5 year warranty.  
This is only valid if the stoves are serviced annually on the anniversary of installation.

For details of the warranty specifications please see page 32 under F.A.Q's and visit our website  
[www.parkray-stoves.co.uk](http://www.parkray-stoves.co.uk) for full Terms and Conditions.  
NB. All images are for illustrative purposes only.





*Baby, it's cold outside...*

*Shake the mud off your boots, come in and light a fire - this compact stove is perfect for intimate moments*



**Output Range:** 3kW - 5.5kW

**Nominal Output:**

Wood: 4.7kW • Smokeless Fuel: 3.3kW  
(no airbrick required)

Where space is tight, or you want to create an intimate atmosphere, the Consort 4 is simply perfect. This multi-fuel stove is small in stature, but big on heat. It fits into the smallest of spaces with no need for an air brick (see FAQs), becoming a real feature of any room. You may be surprised by the heat output from the Consort 4 once it gets going! We've packed a lot into this small stove: the airwash directs warmth over the inside of the door (keeping the glass clean), and our special 'Cleanburn' technology makes it as kind to the environment as it is to you. So you can pile up the logs without worrying about the atmosphere. As for romantic moments... plan for plenty of those, too.



*Consort 4 with single door*

See Technical Key - page 34 for more info.





*There's a designer in the room ...*

*The compelling Consort 5 has a sleek designer look. Stylish, neat and compact, it's available in three coloured finishes*



**Output Range:** 3.5kW - 6kW  
**Nominal Output:**  
 4kW (no airbrick required)

This traditional stove has clean lines and modern features – like Cleanburn technology to deliver an efficient performance. Another bonus is you don't need an air brick (see FAQs). This stylish model can also be customised to your liking. You've chosen the colours for your walls, woodwork and furniture – wouldn't it be nice to have some options when you're choosing your stove? The designer Consort 5 comes in three colour finishes. So tailor it to your taste, and await the compliments...



*Consort 5 with single door*





*The timeless little black stove*

*The chic, unique Compact 5 is the perfect dinner-party guest, creating an enticing focus for any room in your home*



**Output Range:** 3.5kW - 5.5kW  
**Nominal Output:**  
 4.7kW (no airbrick required)

Created without compromise, the Compact 5 is undeniably lovely. The clean lines and elegant design make it perfect for a modern setting. At just 363cm deep, this stove can be fitted in almost anywhere you need a little extra warmth – and a little extra sociability. Why ‘without compromise’? Because the Compact 5 features all of our famous technologies: the ‘Cleanburn’ system to ensure ignition is prompt and efficient, a cool-touch riddling handle, and a hot airwash to keep the glass clean. All this and no need for an air brick in your room (see FAQs), makes the Compact 5 a very attractive proposition indeed...



*Compact 5 with single door*

See Technical Key - page 34 for more info.





*Thought you couldn't fit one in?*

*The Slimline 5 is a slender version of our popular Consort 7. So you can squeeze it in where space is tight*



**Output Range:** 4kW – 7.5kW

**Nominal Output:**  
 4.4kW (no air brick required)

The Slimline 5 is engineered with our usual excellence and all the usual features. It's built with Cleanburn technology – to ensure efficient ignition and less waste – plus a cool-touch riddling handle, easy-clean window, and multi-fuel capacity. The Slimline 5 has a slightly shallower fuel bed, so that it can be fitted in a smaller hearth with the bonus of no need for an air brick (see FAQs). And though she's small, she's fierce.



*Slimline 5 with double door*





*A cosy night in*

*There's nothing quite like a real log fire. Welcome home.*



**Output Range:** 3.5kW - 5.5kW

**Nominal Output:**  
4.8kW (no airbrick required)

Think you might not have the space or time for a wood-burning stove? Think again. With its particularly compact size it's a big performer, producing a generous heat to your room. When you've just come in to a cold house, the Derwent is amazingly quick to warm up – thanks to the Tripleburn feature, which ignites fuel fast. Worrying about the expense of fuel? Don't be. We've made this stove one of our most efficient ever, making logs (or other approved fuel) last even longer. It's just so easy to enjoy a roaring fire all evening. Let the Derwent welcome you home.



*Derwent with single door*

See Technical Key - page 34 for more info.



### *Contemporary country chic*

*You don't need an open fireplace to recreate the modern country look. Our Inset stoves are designed to slide into a standard fireplace opening*



**Inset 5**  
**Output Range:** 3kW - 4.5kW  
**Nominal Output:**  
 4.5kW (no airbrick required)

**Inset 7**  
**Output Range:** 3.5kW - 5kW  
**Nominal Output:**  
 4.5kW - 5kW (no airbrick required)

'Modern country' is all about blending old and new – battered leather sofas with polished floorboards, geometric lines with woollen throws. Our Inset 5 and 7 stoves fit in perfectly. Designed with 19th-century charm and 21st-century technology, they're beautifully at home anywhere. Choose according to size – the 7 heat output is a little larger than the 5. Both are built with our award-winning styling and technology; a hot airwash keeps the glass clean. There's almost nothing old-fashioned about these models – apart from their charm...



*Consort Inset 5 with double door*

See Technical Key - page 34 for more info.



*Slow down and take it easy...*

*The Slimline 9 makes life a little easier. Stack it with logs and set it on 'slow burn' - it's ready when you are*



**Output Range:** 4.5kW - 8kW

**Nominal Output:**  
5kW (no airbrick required)

5" flue Flue for easy installation

The mid-sized Slimline 9 can be left to smoulder as you slumber, so it's ready to warm cold feet at dawn. Despite its elegant stature, this model can hold 20" logs, giving you just a little longer between refuelling. With clever Cleanburn technology, the Slimline 9 gives a heat output of up to 8kW. With a nominal output of 5kW there's an added advantage of no need for an airbrick (see FAQs). A hot airwash prevents carbon from forming on the inside of the glass. So there's nothing to clean and fewer logs to lug about – giving you more time to take it easy.



See Technical Key - page 34 for more info.

\* Meets the requirements of DEFRA  
expected Admin Approval 1st April 2013



*Slimline 9 with double door*



*The environmental choice*

*When every choice you make impacts the world around you, it's important to heat your home in a way that's efficient and eco-kind*



**Output Range:** 4kW - 7.5kW

Fully tested at an independent laboratory on both wood and smokeless fuel.

The striking Consort 7 attracts compliments - it's designed with lots of old-fashioned character. But that's where the similarity ends, because its emissions are much lower than those from traditional stoves. You can choose to burn sustainably-sourced logs, or smokeless fuels - our Cleanburn technology guarantees a cleaner burn. How? Firstly, air jets ignite the gases which are released during combustion, so they burn away instead of flowing into the environment. In addition, our 'Cleanburn' system means that the heat given off by the fuel stays inside the stove for longer, being directed outwards rather than upwards. Your chimney stays cleaner, the environment stays healthier, and your home stays warmer.



Canopy option



Consort 7 with double door

See Technical Key - page 34 for more info.



*You've worked hard today...*

*So choose a stove to work for you.  
The Consort 9 can heat your home,  
warm your water, and toast your  
crumpets.*



**Output Range:** 6kW - 11kW  
For output information on the wrap  
around boiler and clip in boiler options  
please see page 41.

The Consort 9 is a real workhorse. It's designed to fit in most family fireplaces, maximising the heat output and warming your home from the bottom up. Like our other Consort models, it makes it easy for you to adjust the flow of heat. Even at full capacity, the Consort 9's eco-friendly technology means it emits fewer gases into our atmosphere. If you're looking for a hot water option, ask about the wraparound boiler stove. In short, whatever you ask of your stove, the Consort 9 reaches expectations. So you can concentrate... on relaxing.



Canopy options



Consort 9 with double door

See Technical Key - page 34 for more info.



*Enjoy a cosy get-together.*

*Toasted marshmallows, flickering flames, and plenty of laughter - the ingredients for a truly memorable evening*



**Output Range:** 8kW - 15kW  
For output information on the wrap around boiler and clip in boiler options please see page 42.

Are you looking for a stove that can manage the demands of an extended family? The family-sized Consort 15 heats every inch of the largest room – whether it's packed with aunts and children, or just you stealing a moment of peace. And there's nothing quite like a real fire to make your house a home.

This heat giant can even provide enough hot water for the family – just ask about our optional wraparound boiler. However hard it's working, the Consort 15 is kinder to the environment thanks to our unique 'Cleanburn' system. So you can enjoy an old-fashioned family get-together, the modern way.



Canopy options



Consort 15 with double door

See Technical Key - page 34 for more info.



*Perfect for open fireplaces*

*The compact Consort 4 swiftly warms up big spaces.*



**Output Range Double Single**  
4kW - 6kW

**Output Range Double Double**  
6kW - 11kW

Make it the heart of your room and friends and family will soon gather around. With a glass door on both sides, the Consort 4 radiates heat very effectively. This cost-efficient stove belts out heat, making the most of every log (or other approved fuel). Choose from single-depth or double-depth, depending on your space and requirements. Both models feature our coveted Cleanburn technology (for lower emissions), and hot airwash keeping the glass clean. Easy to use and even easier to enjoy, the Consort 4 simply doesn't have a bad side...



*Consort 4 double sided double depth stove*

See Technical Key - page 34 for more info.



*Do a double-take...*

*The Consort 7 is a modern masterpiece. Install it, admire it, and bask in the warmth.*

Just look at those sleek lines and wide viewing windows. The double-sided Consort 7 makes a magnificent centrepiece for your family room. But don't just sit there looking at it. Light a match and enjoy a real fire. Piled with logs (or other approved fuel), the Consort 7 blasts out heat, and can also be adjusted to flicker away idly in the background. Cleanburn technology means that the Consort 7 is kinder to the environment than ever before, making it simply perfect for the modern household.



**Output Range Double Single**  
5kW - 8kW

**Output Range Double Double**  
8kW - 13kW



*Consort 7 double sided double depth stove*

See Technical Key - page 34 for more info.



*Make a grand statement of style.*

*This big, glorious beast of a stove will transform your living space.*

Designed and engineered in Britain, this double-sided stove is hot property. Generously proportioned, it's both an efficient heating solution and a dramatic talking point. Luxuriate in grand design and modern technology: the Consort 9 takes quite some beating. With glass windows on both sides, the Consort 9 is perfect for a large open fireplace, where it will radiate warmth evenly through the room. Equipped with our signature Cleanburn technology, the Consort 9 boasts low emissions and a substantial output (see the tech key on page 34). Now that's given you something to talk about.



**Output Range Double Single**  
6kW - 11kW

**Output Range Double Double**  
8kW - 18kW



*Consort 9 double sided single depth stove*

See Technical Key - page 34 for more info.



*Grand and imposing...*

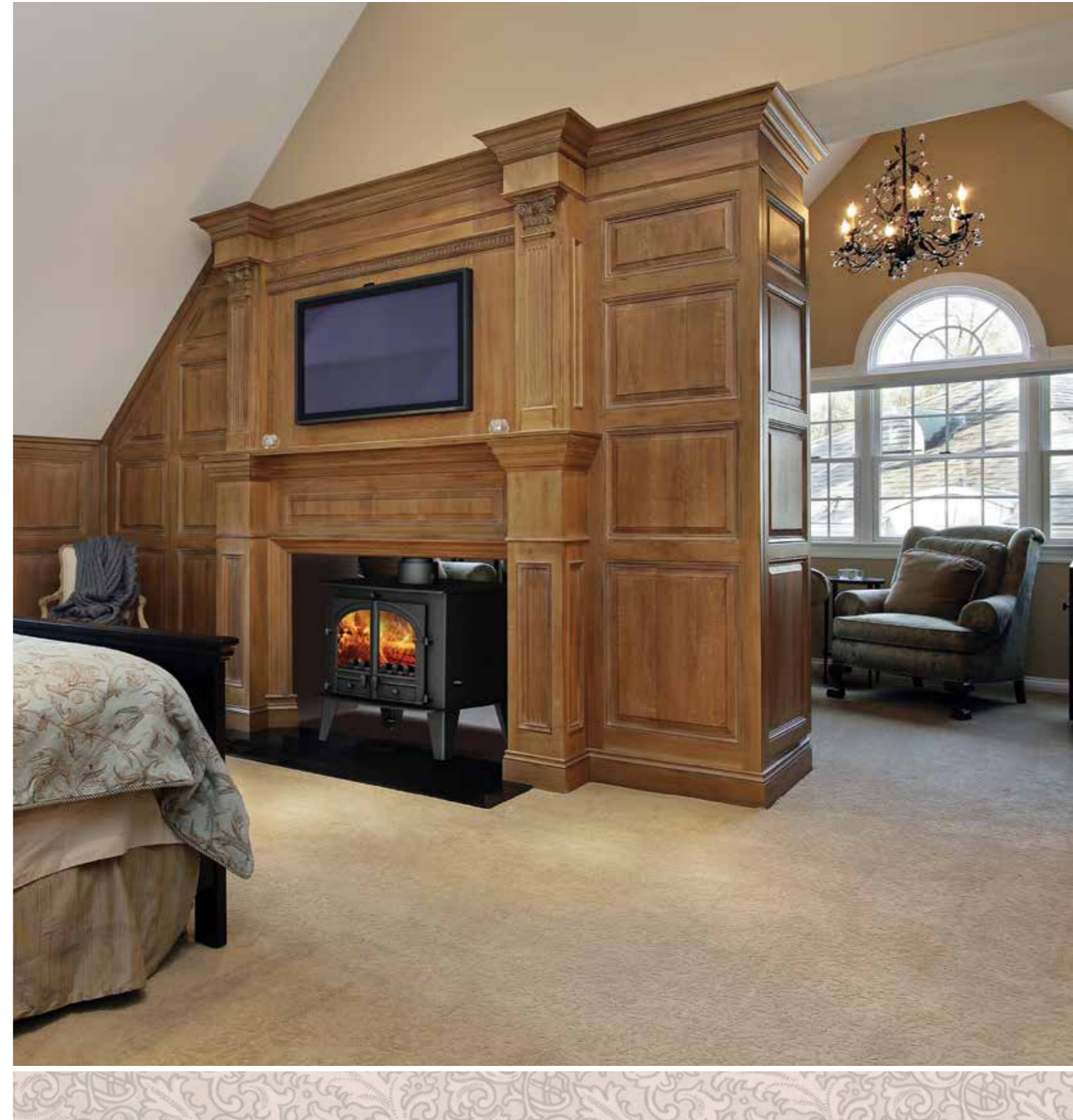
*Thought the Consort 9 was big?  
This is where stoves get serious.*

Meet our biggest stove yet. The luxurious Consort 15 holds buckets of fuel, and creates a seriously hearty output. Fuel it up and the Consort 15 can be left to smoulder. That means you can take a long walk after an enormous Sunday dinner, then relax and relish the warmth that's still radiating from this trusty stove. Equipped with all our finest technology, on a bigger scale, choose the single depth or double depth with heat outputs ranging from 8kW to 25kW, so it can handle big or open-plan spaces with ease. For those who don't do anything in small portions...



**Output Range Double Single**  
8kW - 15kW

**Output Range Double Double**  
14kW - 25kW

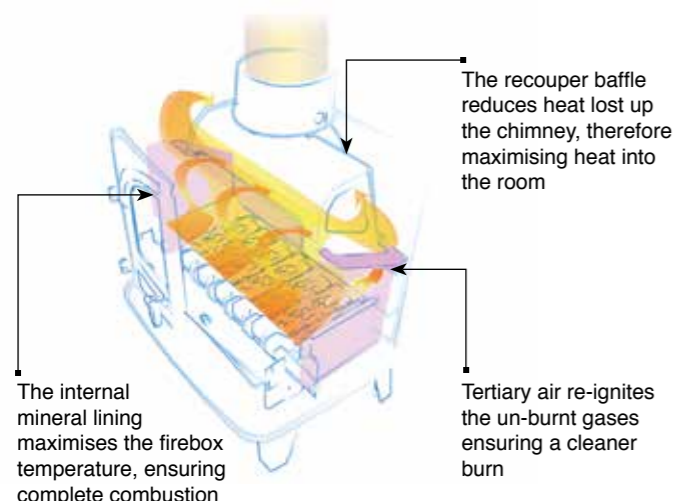


*Consort 15 double sided single depth stove*

See Technical Key - page 34 for more info.

# Parkray cleanburn technology

Consort stoves incorporate the new Parkray Cleanburn technology. The term 'Cleanburn' means that the stoves are more eco-friendly and efficient than conventional stoves, contributing to a cleaner environment.



## Cleanburn technology

With incredibly efficient burning of the fuel, this results in an increased heat output, less smoke and a cleaner environment see diagram above.

## Exceptionally efficient

Due to the Parkray Cleanburn technology, all stoves in the Parkray range burn exceptionally efficiently and cleanly.

## From wood to multi-fuel with a single movement

The integral grate can be changed from wood setting to multi-fuel, with the cold-handled riddling tool.

## Safe and efficient overnight burning

By reducing the air inflow to an absolute minimum, the fire will gently smoulder and remain alight throughout the night. When required, the fire will come to life by simply increasing the air flow into the stove.

## Dust free, safe and easy riddling

By simply moving the riddling tool backwards and forwards, which moves the grate open and closed, the stove riddles safely with a minimum of effort. This is undertaken with the doors closed and is completely dust free

## Interchangeable flue outlets

All the single sided free standing stoves in the Parkray range can be flued from either the top or the rear of the stove.



## Easy access for chimney sweeping

The stoves feature a removable throat plate, giving full and easy access for sweeping the chimney.

## Internal lining system

The new internal lining system maximises the firebox temperature, ensuring complete combustion

## Cold-handled riddling tool

The cold handled riddling tool can be used for opening and closing the doors, riddling the grate, grate adjustment and easy removal of the ash pan.

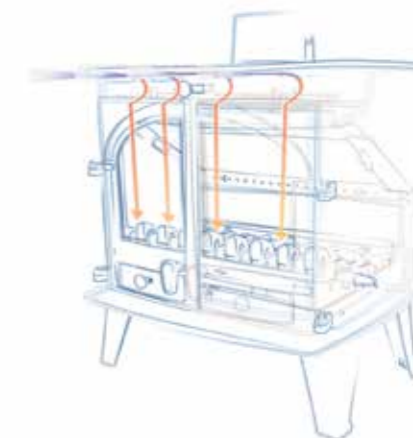
## Thermostat

An optional thermostat is available on all central heating models

## Hot Airwash

### The airwash ensures the glass is kept clean

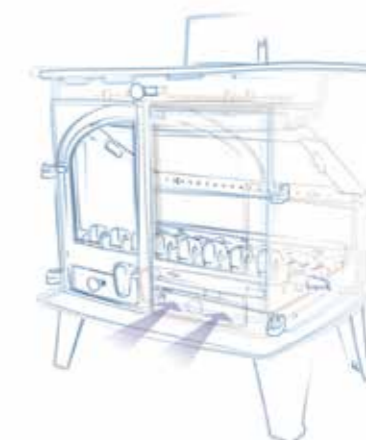
The airwash is achieved by air being drawn into the top of the stove and heated in the central air chamber before being directed down behind the glass door, creating a screen between the fire and the glass. Smoke or combustion particles do not come into contact with the glass, leaving it clean to see through.



## Solid Fuel

### Optimum solid fuel burning conditions

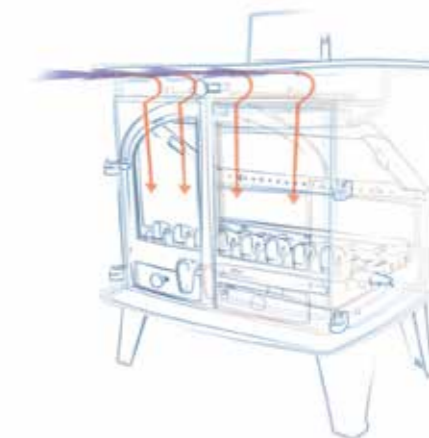
When burning coal and for easy lighting of the stove the grate is changed to the open position by a single turn of the handle. Air can then be directed under the open grate and into the heart of the fire - the optimum conditions for burning solid fuel.



## Woodburning

### Optimum woodburning conditions

For efficient woodburning the hot 'airwash' is directed down the stove door and into the heart of the wood fire, this ensures complete combustion which helps to keep the chimney clean. When the grate is in the closed position creating a flat base, this allows a deep bed of ash to build up - the optimum conditions for burning wood.



# FAQs

## DOES PARKRAY SELL DIRECT TO THE PUBLIC?

No. We have a network of trusted dealers with showrooms throughout the UK and Europe. To locate your nearest dealer please visit our website [www.parkray-stoves.co.uk](http://www.parkray-stoves.co.uk) and use our Dealer Locator link on the home page.

## HOW DO I GET MY NEW STOVE INSTALLED?

Installation must be carried out by a Hetas-approved or similarly qualified engineer and must be in accordance with Building Regulations. To investigate the suitability of your chimney, contact your local dealer, who will be pleased to arrange a site visit. This is very important, because the condition of your chimney will determine how well your stove performs; a poor chimney system will affect its efficiency. Any existing flue must be swept and inspected before installation of the stove. All multi-fuel/wood burners must be installed in a class 1 chimney.

## WHAT IF I DON'T HAVE A CHIMNEY?

There are many different flue systems available. Please contact your local dealer/ flue installer, who will be able to give you personal advice.

## CAN I CONNECT TWO STOVES TO ONE FLUE SYSTEM?

No. All Parkray Stoves must be individually flued.

## MY STOVE HAS A 6" FLUE COLLAR; CAN I INSTALL IT ON A 5" FLUE?

No. The internal diameter of the flue must be no smaller than the appliance flue collar for its entire length. If burning wood on a stove with a 5" outlet a 6" liner must be fitted.

## DOES MY CHIMNEY NEED LINING?

This is to be decided by your qualified Engineer.

## DO I NEED AN AIR BRICK?

Yes if the output is above 5kw or if the air permeability rate requires it. Please see Building Regulations Document J for further information.

## CAN I BURN WOOD ON MY MULTI-FUEL GRATE?

Yes. All Hunter multi-fuel appliances are capable of burning wood.

## WHAT TYPE OF FUEL CAN I USE?

The quality of fuel will dictate the performance of your Parkray Stove.

## WOODBURNING

Burn only dry, well seasoned wood. For best results, use dry wood, with a moisture content of less than 20%, which has been cut, split and stacked for at least 12 months. This is advertised as 'seasoned' wood. Burning wet or unseasoned wood will create tar deposits in the stove and chimney and won't produce a satisfactory heat output. Wood burns best on a bed of ash and it is therefore only necessary to remove surplus ash from the stove occasionally.

## PEAT

Only to be used in turf or brick form, but the moisture content must be very low.

## SMOKELESS FUEL BURNING

Anthracite is an approved natural smokeless fuel (not processed) but can vary greatly in quality and performance. It generally requires excellent air supply to maintain maximum performance and with experience we would suggest that it is used in conjunction with other approved manufactured smokeless fuels as per the HETAS approved list.

Please visit [www.hetas.co.uk](http://www.hetas.co.uk) for an up to date list of approved Manufactured Smokeless Fuels suitable for closed appliances.

Only authorised smokeless fuels may be used in smoke control areas.

Warning! - Petroleum coke fuels or household waste must not be burnt on our appliances. Should any difficulties arise over fuel quality or suitability, consult your approved coal merchant or the Solid Fuel Advisory Service – **Telephone 0800 600 000.**

## CAN I BURN WOOD ON MY MULTI-FUEL GRATE?

Yes. All Parkray multi-fuel appliances are capable of burning wood.

## CAN I SWEEP MY CHIMNEY THROUGH THE STOVE?

Yes – it is possible to sweep the chimney through the stove. A clip-in boiler installation should have an additional means of access to the flue system to allow cleaning – usually a soot door in the first length of flue pipe.

## CAN I RUN MY BOILER STOVE DISCONNECTED?

No. The stove should not be fired with the boiler disconnected or empty, as this could cause serious damage to the appliance.

## HOW MUCH SPACE WILL MY STOVE NEED?

With all our freestanding units it is safe to install with a clearance of 2" (50mm) either side and above the stove to NON Combustible material. However for optimum performance and heat

output we recommend a clearance of 6" (150mm). Behind the stove there should be a minimum clearance of 2" (50mm) however to enable access to the Tertiary Air inlet we recommend 4" (100mm). For all our units the hearth should extend 300mm in front of the appliance (from the door opening)

## SPARK GUARDS

Our multi-fuel stoves have been tested and CE certified by an approved independent testing facility, to the current CE legislation. In addition to this all of our stoves exceed the minimum efficiency requirements as set out by the English & Welsh Building Regulations part L. In order to achieve this, all of our stoves are tested as closed appliances and therefore must be documented accordingly. Some customers choose to run appliances with the doors open. In doing this they accept that the operating characteristics of the stove might change. This is a personal choice and it is the reason that we supply Spark Guards, as an option. If our stoves are run with the doors open then the operation of the flue, ventilation to the room and the quality of the fuel will need to be very good, in order to prevent smoke spillage into the room. Not all installations will be able to achieve this.

## WHAT IS A FRONT EXTENSION

Most of the Multi Fuel Parkrays have the option of using one of these. It is called, an 'Extension' because it increases the fuel load size within the firebox. Especially helpful for overnight burning. Please see the page 36 for image.

## WHAT IS THE DIFFERENCE BETWEEN A WOODBURNER AND A MULTI FUEL?

A wood burner can only burn well seasoned logs, and the wood is burnt on the base of the stove. You use a shovel to clean out the ash. A multi fuel stove comes with a grate where you can burn both Smokeless fuel or well seasoned logs. There is an ash pan beneath the grate for easy removal of ash.

## DO I NEED TO PURCHASE A MULTI FUEL OR WOOD CONVERSION KIT?

If you have purchased a multi fuel stove and then decide you wish to convert to a pure woodburner, you would then require a wood conversion kit. And vice versa with a multi fuel kit if you wanted to change from a wood burner to multi fuel.

## WHAT IS A GATHER BOX AND WHEN IS IT NEEDED?

A gather box is for rear flue installations where space is limited. It bolts directly on to the rear of the stove in place of the collar. Please see page 36 for image.

## DO I NEED A DAMPER?

If your chimney has an exceptionally good draught, it may be worth fitting a damper. This helps reduce

the pull on the chimney and helps keep heat within the firebox which is then transferred into the room. A damper also helps when burning wood over night as it slows the burn rate down and increases the burn time on the wood.

## WHAT DOES 'CE' MEAN

All appliances marked with the 'CE' mark mean they have been independently tested to meet the requirements of the BS EN13240

## WHAT IS A NOMINAL OUTPUT?

The nominal output is the output achieved under specific test conditions by the test laboratory. This is normally the output at which we achieve the highest efficiency. The stoves tend to be operated with the air controls set at less than maximum and with relatively modest fuel loads. However we recognise that end users are unlikely to operate the stoves in this way and therefore we carry out internal testing to suggest a reasonable Heat Output Range that the customer should achieve without over firing the unit.

## CAN I SWEEP MY CHIMNEY THROUGH THE STOVE?

Yes – it is possible to sweep the chimney through the stove. A clip-in boiler installation should have an additional means of access to the flue system to allow cleaning – usually a soot door in the first length of flue pipe.

## HOW DOES THE OPTIONAL THERMOSTAT WORK

The Thermostat automatically regulates the temperature of the water in the boiler to the required setting by allowing primary air into the stove when cold and restricting it when hot.

**NB. Available for central heating models only**

## WHAT WARRANTY DO I GET ON MY STOVE?



All Parkray Stoves Authorised Dealers provide you with a standard 2 year warranty\*. Parkray Stoves also come with a 5 year casting warranty\*

For full warranty specifications please visit [www.parkray-stoves.co.uk](http://www.parkray-stoves.co.uk)

(\*Naturally wearing consumables such as glass, bricks, baffles, log retainers etc are excluded from this warranty. \*\*The casting warranty does not cover items such as grate parts etc)

For a list of authorised stockists please use our dealer locator which can be found on our website [www.parkray-stoves.co.uk](http://www.parkray-stoves.co.uk)

Technical key

NB. Ventilation is dependent on the permeability rating of the building.  
For further details please visit: <http://www.planningportal.gov.uk/buildingregulations/approveddocuments/partj/approved>  
and download the free copy of Document J. Info about the ventilation and air permeability ratings is table 1 on page 29.

	Derwent	Inset	Inset	Consort	Consort 4	Consort 4	Consort 5	Compact 5	Consort 5	Consort 7		Consort 7	Consort 7	Consort 9	Consort 9	Consort 9	Consort 9	Consort 15	Consort 9	Consort 15	Consort 15	Consort 15
		5	7	4	Double Single	Double Double	Standard		Slimline	Standard		Double Single	Double Double	Slimline 5" Flue	Standard	Double Single	Double Double	Standard	Central Heating <sup>1</sup>	Central Heating <sup>1</sup>	Double Single	Double Double
DEFRA Approved	~	~	~	~	~	~	✓	✓	✓	✓		~	~	~	~	~	~	~	~	~	~	~
Heat Output Range ( to room )	3.5 - 5kW	3.4 - 5kW	3.5 - 5kW	3 - 5.5kW	4 - 6kW	6 - 11kW	3.5 - 6kW	3.5 - 5.5kW	3.5 - 6kW	4 - 7.5kW		5 - 8kW	8 - 13kW	4.5 - 8kW	6 - 11kW	6 - 11kW	8 - 18kW	8 - 15kW	1.7 - 2.2kW	4.8kW	8 -15kW	14 - 25kW
Efficiency on wood %	76.8	76.9	72.6	72.8	72.7	75.4	78	76	74.1	75.9		n/a	n/a	72.4	78.9	74.3	79	78.6	73.4	73.6	75.7	71.1
Flat Top	✓	✓	✓	✓	✓	✓	✓	✓	✓	✓		✓	✓	✓	✓	✓	✓	✓	✓	✓	✓	✓
Low Canopy option	~	~	~	~	~	~	~	~	•	•		~	~	•	•	~	~	•	•	•	~	~
High Canopy Option	~	~	~	~	~	~	~	~	•	~		~	~	•	•	~	~	•	•	•	~	~
Double door option	~	✓	✓	~	~	~	~	~	✓	✓		✓	✓	✓	✓	✓	✓	✓	✓	✓	✓	✓
Single door option	✓	•	•	✓	✓	✓	✓	✓	•	•		•	•	•	•	•	•	•	•	•	•	•
Multi Fuel Option	✓	✓	✓	✓	✓	✓	✓	✓	✓	✓		✓	✓	✓	✓	✓	✓	✓	✓	•	•	✓
Wood Burning only option	~	~	~	•	•	•	•	•	•	•		•	~	•	•	•	•	•	•	•	•	•
Black knob set	✓	✓	✓	✓	✓	✓	✓	✓	✓	✓		✓	•	✓	✓	✓	✓	✓	✓	✓	✓	✓
Flue Damper	•	~	~	•	•	•	•	•	•	•		•	•	•	•	•	•	•	•	•	•	•
Sparkguard <sup>2</sup>	~	~	~	~	~	~	~	~	•	•		•	•	•	•	•	•	•	•	•	•	•
Multi fuel Extention	~	~	~	•	•	•	•	•	•	•		•	•	•	•	•	•	•	•	•	•	•
Coloured finish	•	•	•	•	•	•	•	•	•	•		•	•	•	•	•	•	•	•	•	•	•
Clip in Boiler Option <sup>1</sup>	~	~	~	~	~	~	~	~	~	•		~	~	~	•	~	~	•	~	~	~	~
Output nominal/ max kw	4.8kw	4.5kw	4.5 - 5kw	3.3-4.7kw	5.1-6kw	10.6kw	4kw	4.7kw	4.4kw	5.4-6.5kw		5.5-6.5kw	10.5kw	5kw	7.8 - 9.1kw	7.6 - 8.9kw	11.4kw	9-11.9kw	8 - 8.6kw	13.9-14.3kw	11.6-13.3kw	13.9 -14.3kw
Ventilation (mm <sup>2</sup> ) <sup>3</sup>	~	~	~	~	225	2750	~	~	~	825		825	3025	~	2255	2145	3520	4950	2255	4950	4565	7040
Leg Lengths	1 1/2" - 138mm	~	~	5" - 127mm	5" - 127mm	5" - 127mm	5" - 127mm	5" - 127mm	5" - 127mm	6" - 152mm		6" - 152mm	6" - 152mm	5" - 127mm	6" - 127mm	6" - 152mm	6" - 152mm	6" - 152mm	6" - 152mm	7" - 178mm	7" - 178mm	7" - 178mm
Log Length (Approx)	15 3/4 - 400mm	8" - 200mm	12 1/4 - 310mm	11" - 280mm	11" - 280mm	11" - 280mm	11"- 280mm	13" - 300mm	16" - 405mm	15" - 380mm		15" - 380mm	15" - 380mm	19 3/4 - 500mm	19 3/4 - 500mm	19 3/4 - 500mm	19 3/4 - 500mm	19 3/4 - 500mm	19 3/4 - 500mm	19 3/4 - 500mm	19 3/4 - 500mm	

Consort 9 Boiler Output Range  
Nominal Output burning wood – 6kw to water, 2.2kw to the room  
Nominal Output burning Smokeless Fuel – 6.3kw to water, 1.7kw to room  
Maximum output – 8.5kw (29,000btu's) to water, 2.5kw to room

Consort 15 Boiler Output Range  
Nominal Output burning wood – 9.1kw to water, 4.8kw to the room  
Nominal Output burning Smokeless Fuel – 9.5kw to water, 4.8kw to room  
Maximum output – 13kw (44,000btu's) to water, 3kw to room

✓ = standard  
• = option  
~ = not available



1. For Boiler outputs see pages 38-44  
2. Sparkguard - only available on double door options  
3. Please check FAQs for further advice.

# Parkray options

Your new stove is ready to be customised.  
Would you like double doors, or a colour to match your interior?



Optional flue damper



Optional flue gather box

Optional flue damper and gather box: use the damper to reduce the air inflow and let your stove burn slowly overnight when burning wood. The flue gather channels smoke into the flue; check whether you have or need one.



\*Optional spark guard



Optional multi-fuel front extension for larger fuel loads



Optional wood front for Consort 9 Shown



Optional wood front for Consort 4



Make it unique: choose a subtle, Cloudy Blue or Forest green finish for your stove.  
(Colours shown may differ to actual shades.)  
Alternative colours are available contact your dealer for a colour chart.

**\*Coming Soon**

## SINGLE OR DOUBLE DOOR?

Nearly all our models are available with a single door or double door.

The larger models are available with a single door or double door. While the single door option provides a better viewing window, the double door gives a traditional appearance.



## SINGLE OR DOUBLE-SIDED?

The Consort 4, 7, 9 and 15 can be built as double-sided stoves, which means both sides have doors. You can opt to have these in a double depth, too, so the fuel bed is larger.

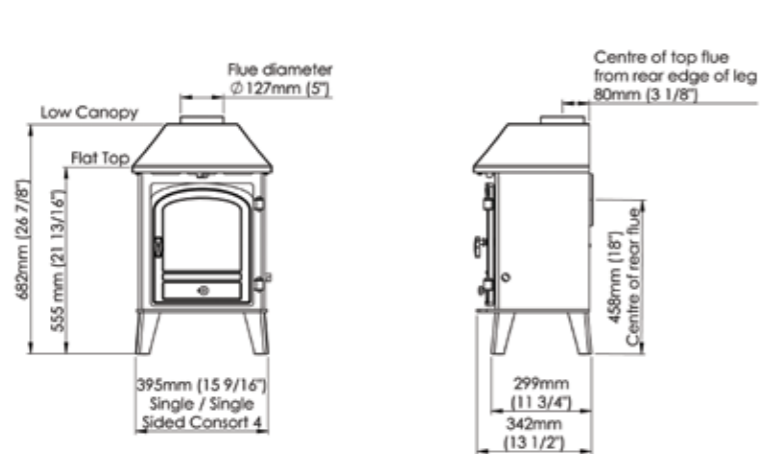


## CANOPY?

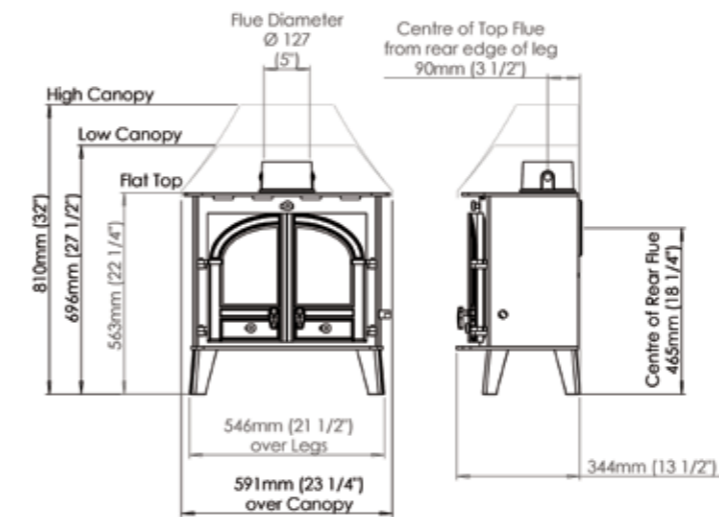
Most models have a matching canopy which you can choose to add to your purchase.



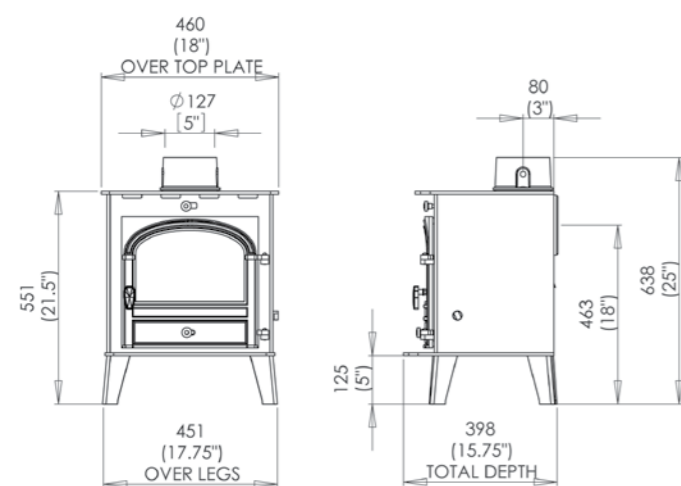
Consort 4, page 2



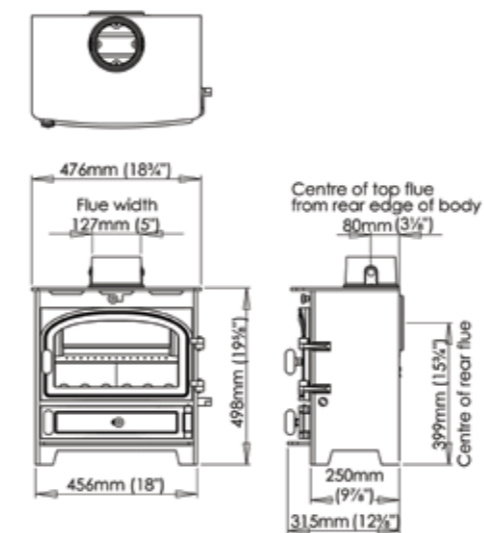
Slimline 5, page 8



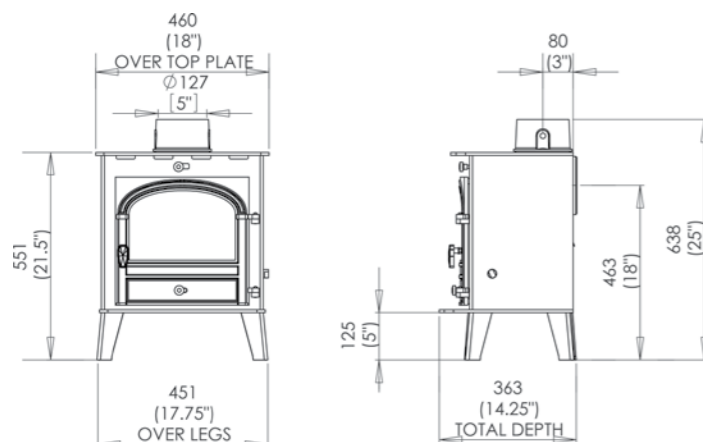
Consort 5, page 4



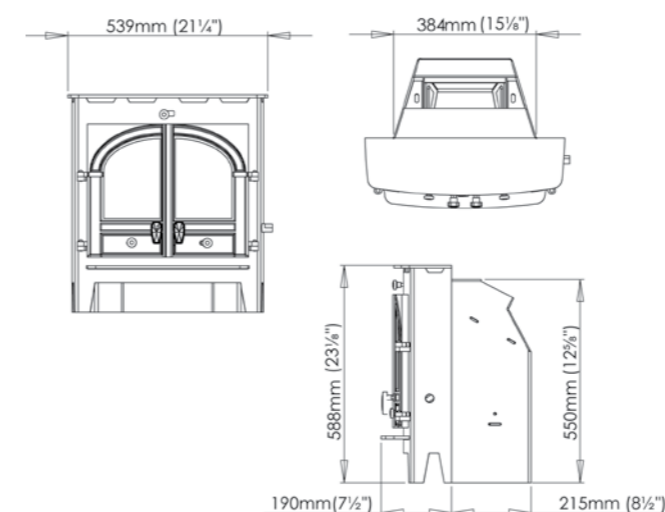
Derwent, page 10



Compact 5, page 6

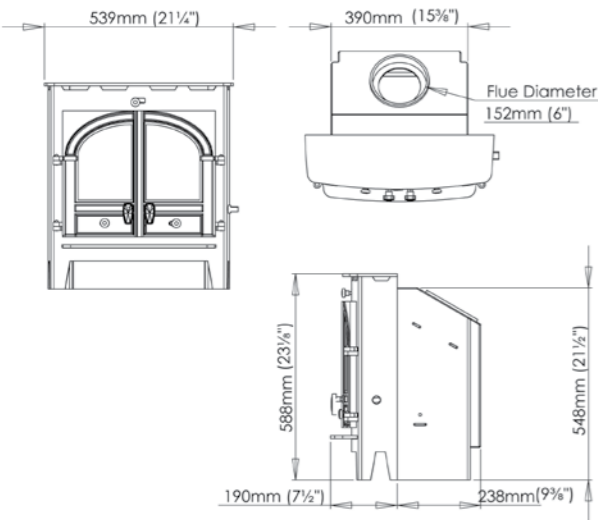


Inset 5, page 12



NB. Flue liner adaptors are available as an optional extra

Inset 7, page 12



NB. Flue liner adaptors are available as an optional extra

Important information - Consort Inset

Inset 5's are designed to fit with a chairbrick but if there is no charibrick it must be back filled.

Inset 7's are designed to fit WITHOUT a chairbrick

All inset installations must have a 'Throat Forming Lintel', if a 'Builders Opening Lintel' is present then this will have to be modified for these units to be fitted.

If you intend on fitting the flue liner adapter with the inset 5, please be aware that the top of the chairbrick needs to be removed. Any queries on suitable installations please contact your local dealer.

The clearance distances to combustible material for the Inset 5 are: 315mm from the side of the stove and 460mm from the top. This equates to : 1050mm from the floor and 569mm either side of the centreline of the stove.

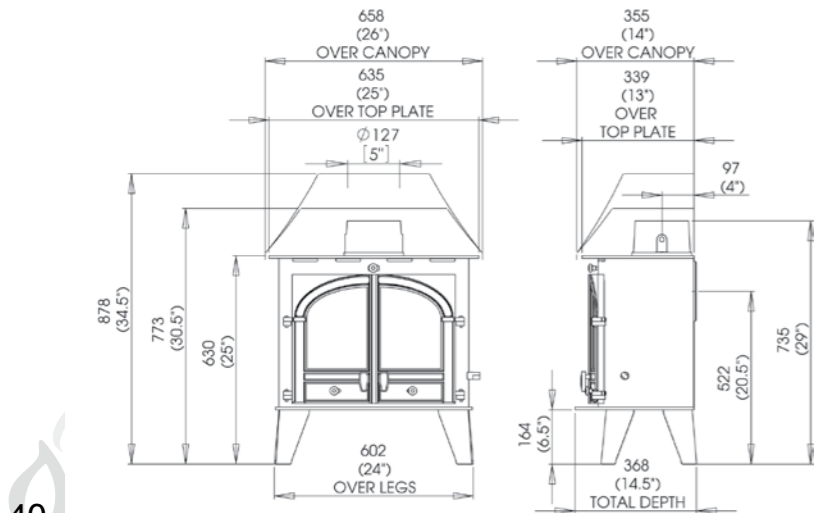
The clearance distances to combustible material for the Inset 7 are: 160mm from the side of the stove and 350mm from the top.

This equates to: 938mm from the floor and 429.5mm either side of the centreline of the stove.

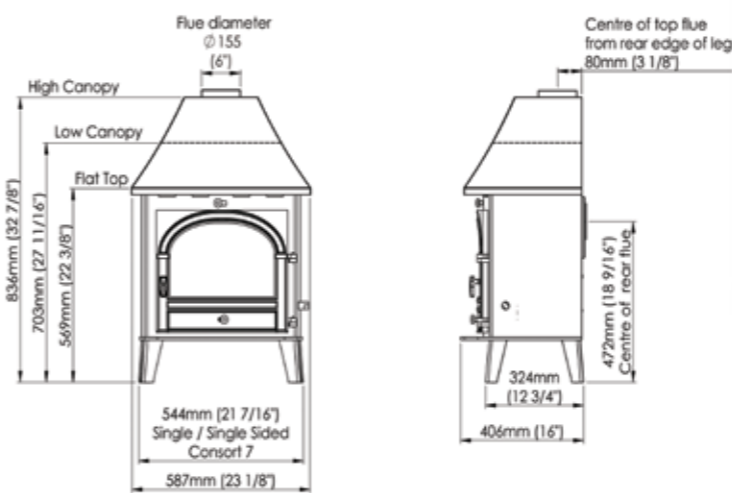
There are many fire surrounds on the market that are only suitable for gas or electric inset fires.

Suitable surrounds for solid fuel inset appliances are usually cut in 3 sections and slabbed. For advice on a suitable surround contact your local dealer.

Consort Slimline 9, page 14



Consort 7, page 16

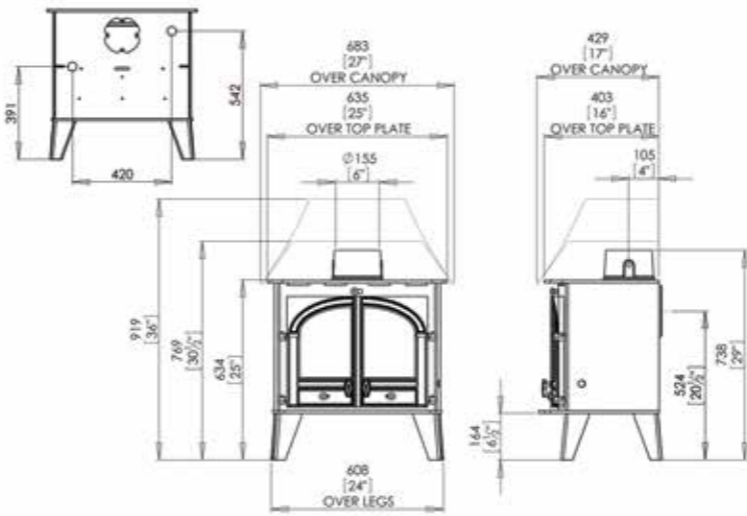


Boiler option Consort 7  
Clip-in Boiler 13,600 BTU's  
Output dependent on fuel load \* 1.5kW heat output to the room 4kW heat to the boiler \*

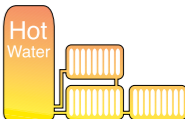


\* Recommend a radiator is in the same room as the stove

Consort 9, page 18

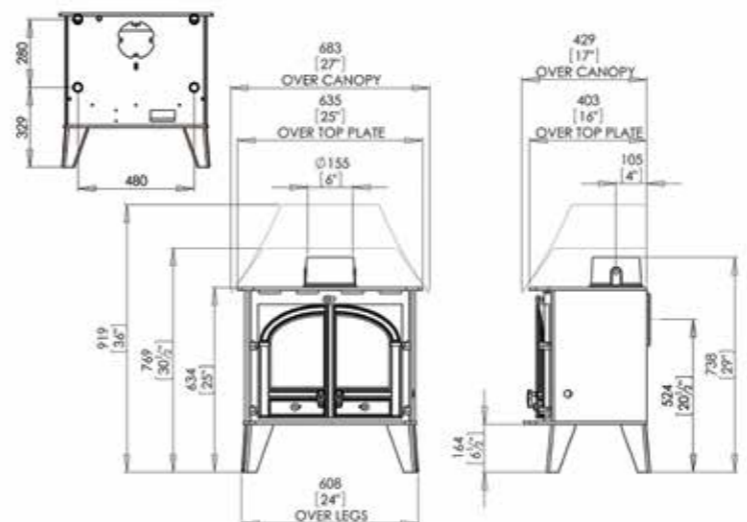


Boiler option 2 Consort 9  
Clip-in Boiler 18,750 BTU's  
Output 2.5kW heat output to the room 5.5kW heat to the boiler \*

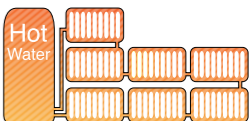


\* Recommend a radiator is in the same room as the stove

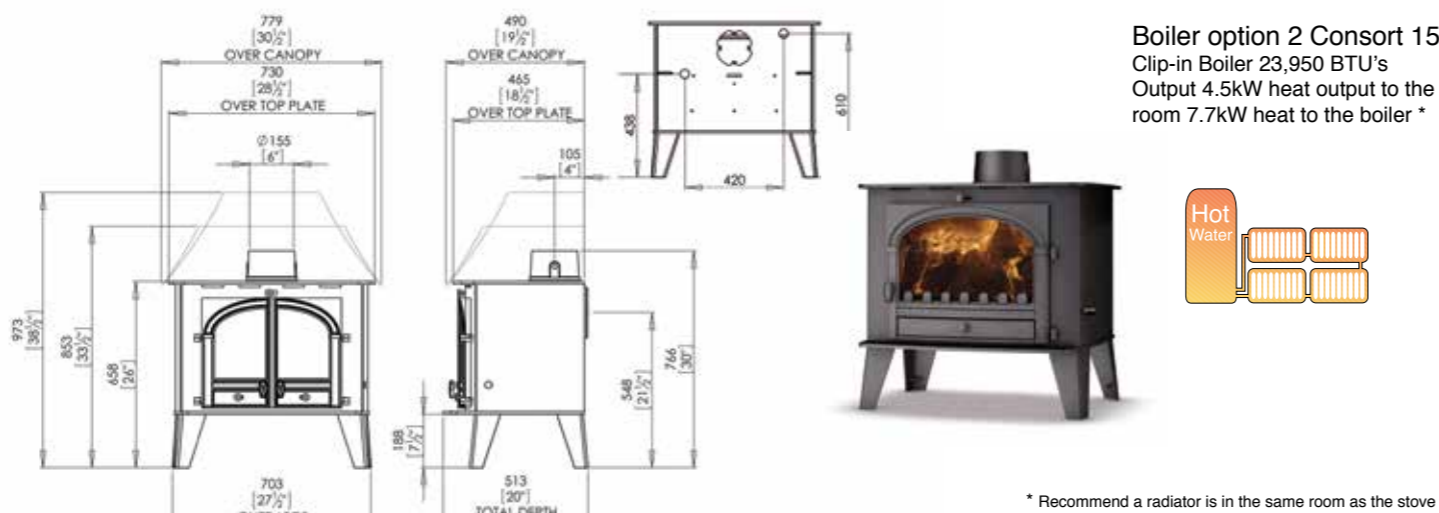
Consort 9, page 18 (Wraparound Boiler Option)



Boiler option 1 Consort 9  
Wraparound Boiler 29,000 BTU's  
Output 2.2kW heat output to the room 6.4kW heat to the boiler \*



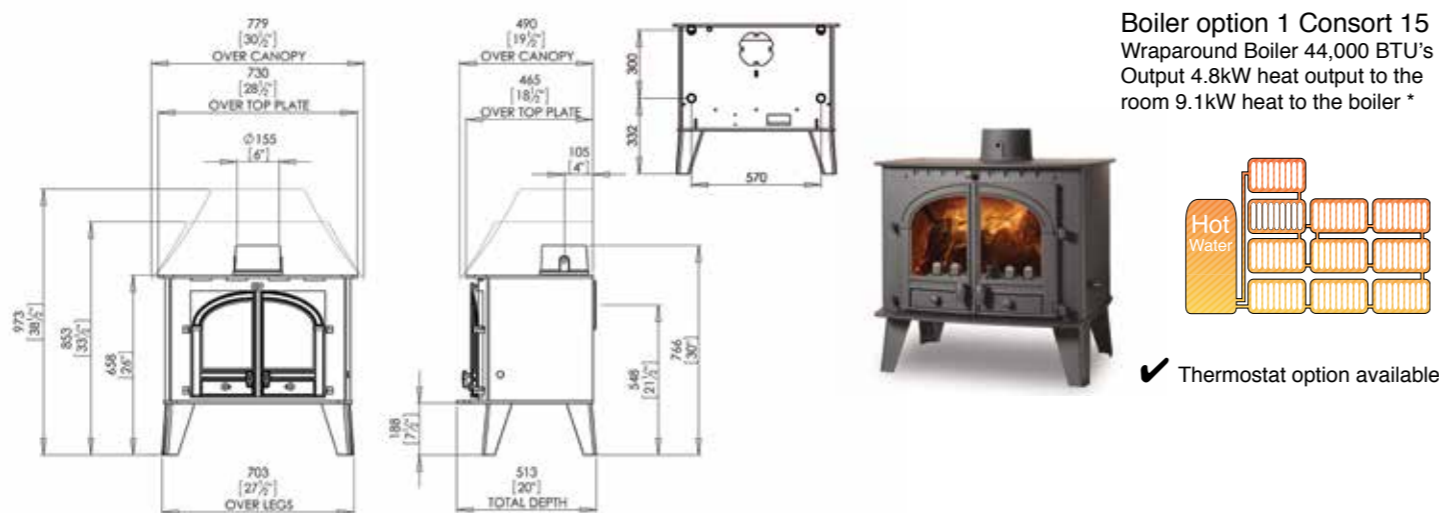
Consort 15, page 20



Consort 4 Double Sided, DD\*, Page 22



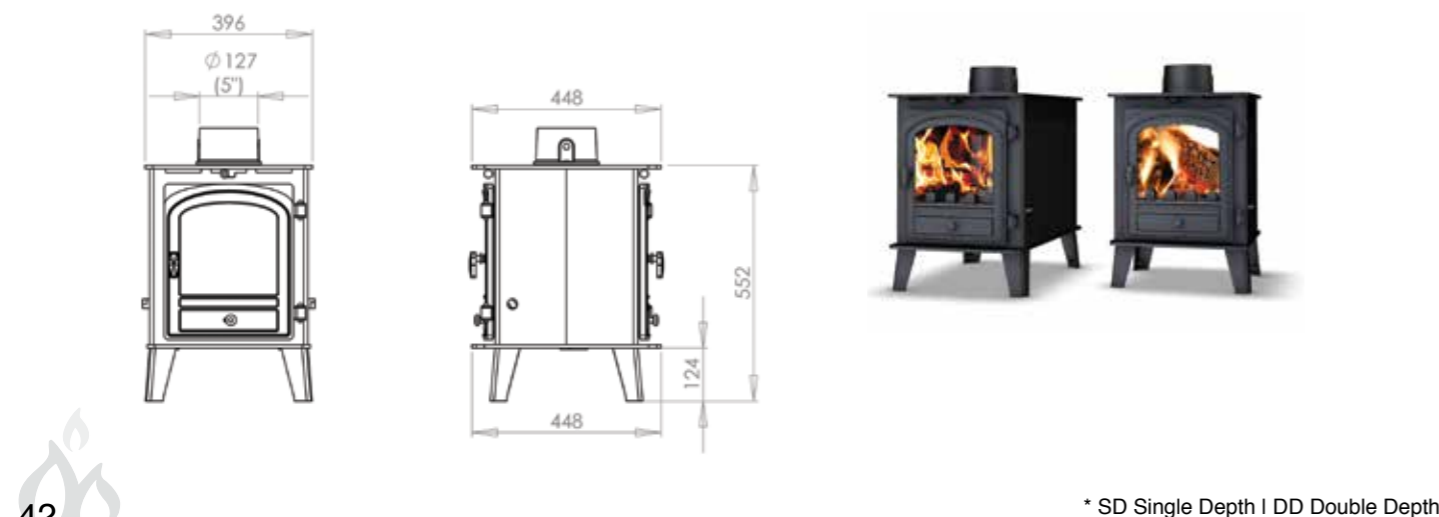
Consort 15, page 20 (Wraparound Boiler Option)



Consort 7 Double Sided, SD\*, Page 24



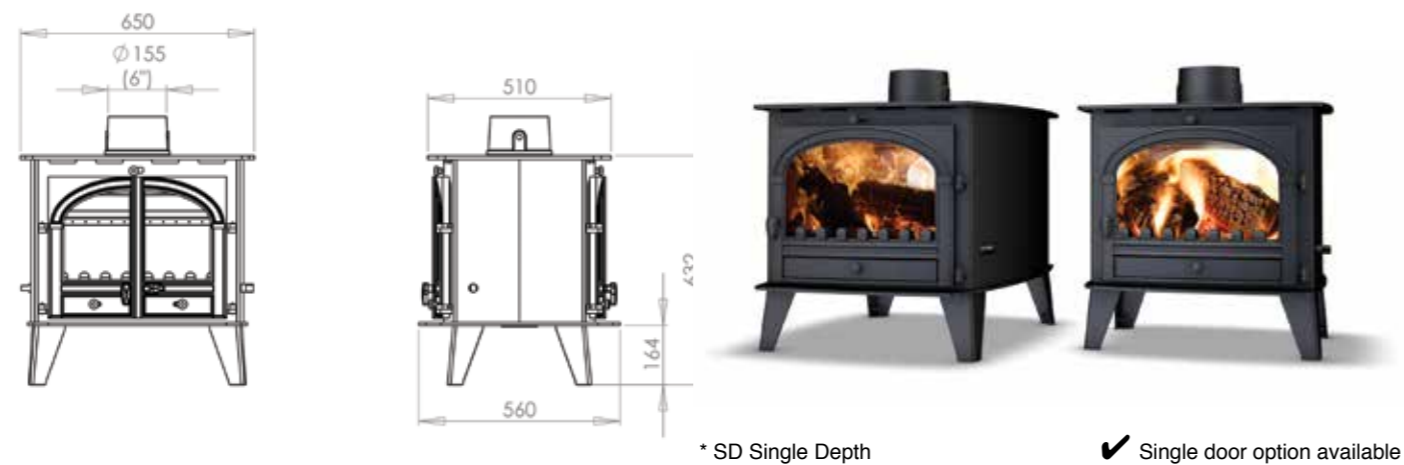
Consort 4 Double Sided, SD\*, Page 22



Consort 7 Double Sided, DD\*, Page 24



Consort 9 Double Sided, SD\*, Page 26



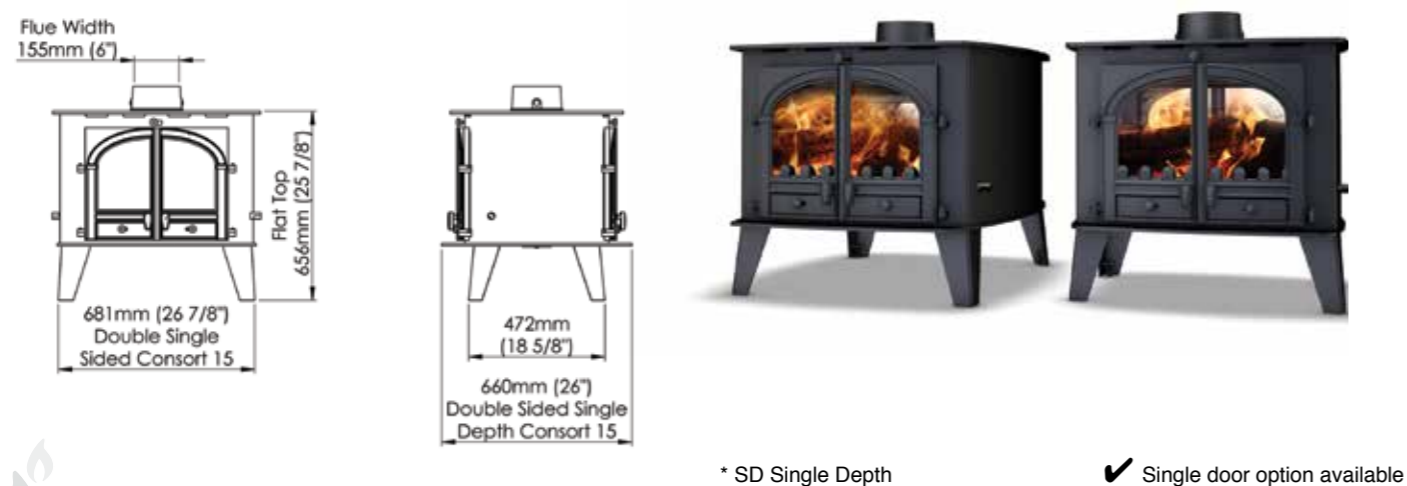
Consort 15, Double Sided, DD\*, Page 28



Consort 9 Double Sided, DD\*, Page 26



Consort 15, Double Sided, SD\*, Page 28



**Please note:** The outputs of the new stoves within the Consort range have been calculated in-house, awaiting independent results, therefore outputs may vary. Heat outputs are dependent on fuel load and installation parameters. Overnight burning is dependent on fire box size, fuel load etc. Parkray has a policy of continuous product improvement and therefore reserves the right to change specifications and designs at any time without prior notice.

Parkray strongly recommends that the suitability of any installation should firstly be agreed with a HETAS qualified installer or similarly competent professional, to ensure compliance with the recent changes to the Building Regulations. Parkray will not be held responsible for any losses, however arising, from inappropriate installations by unqualified or non-competent installers. An inappropriate installation may also invalidate claims made under a manufacturer's warranty or guarantee.



Your Parkray dealer



Parkray Limited

Unit 6, Old Mill Industrial Estate, Stoke Canon, Devon EX5 4RJ  
[www.parkray-stoves.co.uk](http://www.parkray-stoves.co.uk)   [info@parkray.co.uk](mailto:info@parkray.co.uk)